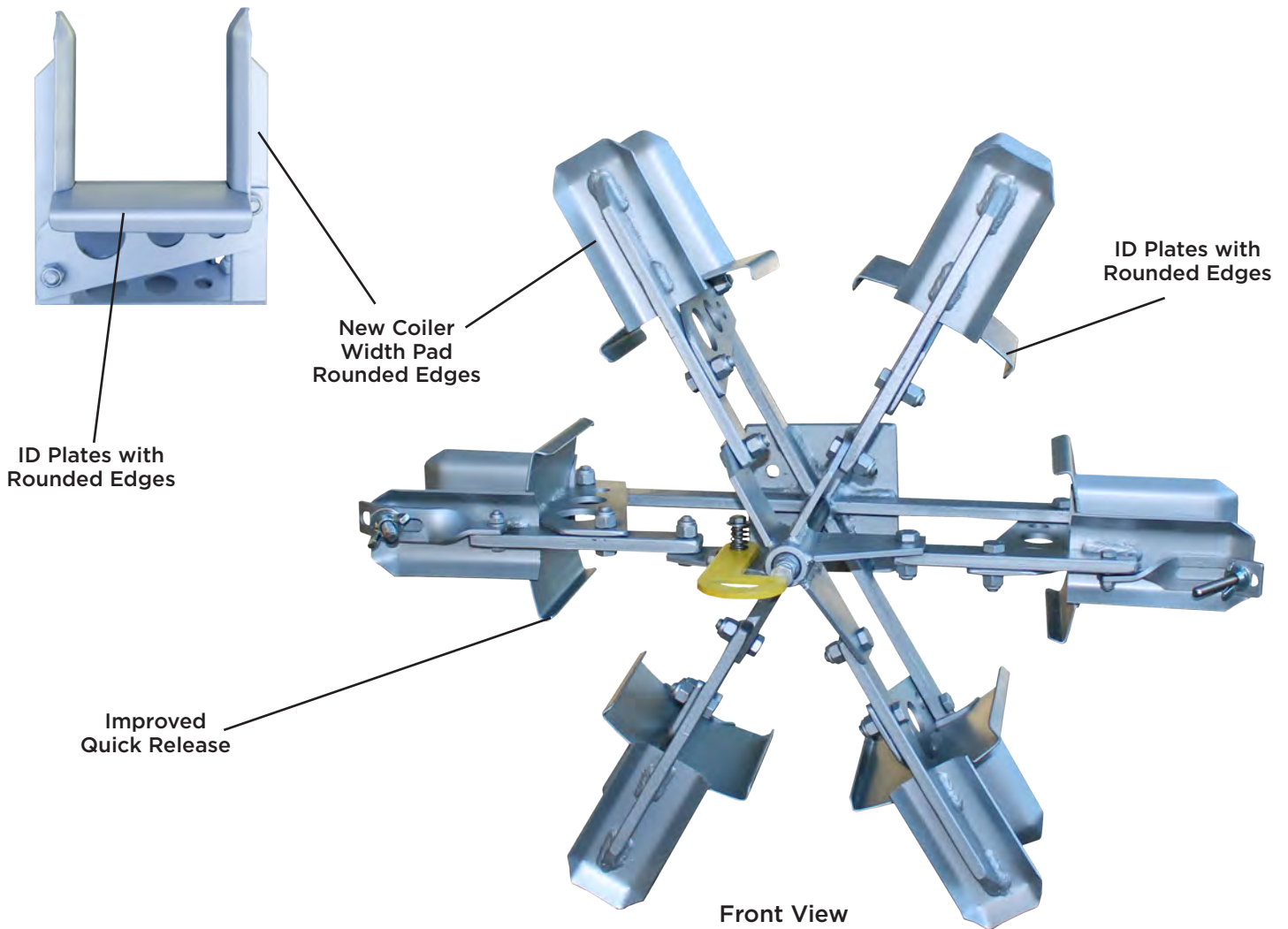


COILING HEADS

**NEW AND
IMPROVED**

Collapsible Coilers - Standard & Custom Sizes

Available in either Aluminum or Steel, Collapsible Coilers are crafted to be used with our shafted and shaftless machinery. They are easily connected and removed, saving many manhours of labor. These coilers are available in several standard sizes (See chart on back).



Shown above is a 7C-6 Steel Coiler in Coiling Position. Available in lightweight aluminum.

REELMATIC

The Leader in Reeling, Coiling & Processing Solutions

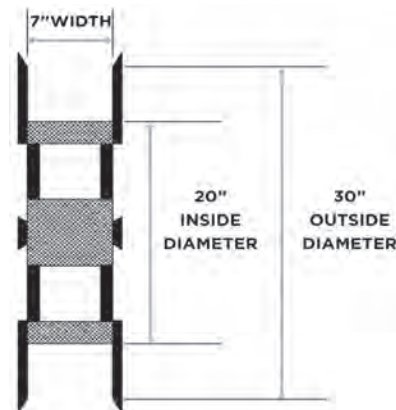
6408 S. Eastern Avenue | Oklahoma City, OK. 73149
405.672.0000 | 405.672.7200 Fax
www.reelomatic.com

COILING HEADS

Collapsible Coilers - Standard & Custom Sizes

Special Features Available

- Non-scuff coated surface to prevent scarring of sensitive material.
- COILER GUARD: For those applications requiring an enclosed coiler for safety purposes (easily removed and stored when not in use).
- Exclusive Coiler Quick Disconnect feature available on Reel-O-Matic machinery
- Powered Collapse Feature



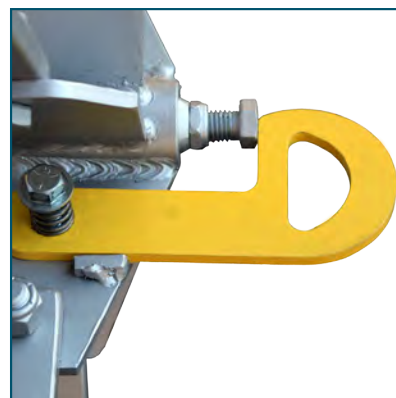
Sample Coiler Dimensions

Standard Models

| Product | Model | #Arms | Construction | Size |
|---------|----------|-------|--------------|---------------------------|
| Coilers | 5C - 4 | 4 | Steel | 20" ID x 30" OD x 5" Wide |
| Coilers | 5C - 6 | 6 | Steel | 20" ID x 30" OD x 5" Wide |
| Coilers | 5C - 6AL | 6 | Aluminum | 20" ID x 30" OD x 5" Wide |
| Coilers | 7C - 4 | 4 | Steel | 20" ID x 30" OD x 7" Wide |
| Coilers | 7C - 6 | 6 | Steel | 20" ID x 30" OD x 7" Wide |
| Coilers | 7C - 6AL | 6 | Aluminum | 20" ID x 30" OD x 7" Wide |

*Custom Coiler Sizes Available Upon Request

*Removable Sideplate Coilers Custom Made as Ordered



New "HD" Latch

Collapsible Coiler Material Capacity Spreadsheet

| 5C - 5" Wide x 20: ID x 30" OD | | 7C - 7" Wide x 20" ID x 30" OD | |
|--------------------------------|-----------------|--------------------------------|-----------------|
| Material Diameter | Capacity (Feet) | Material Diameter | Capacity (Feet) |
| 1/8" | 9,400' | 1/8" | 13,100' |
| 1/4" | 2,300' | 1/4" | 3,200' |
| 3/8" | 1,000' | 3/8" | 1,400' |
| 1/2" | 580' | 1/2" | 820' |
| 5/8" | 370' | 5/8" | 520' |
| 3/4" | 260' | 3/4" | 360' |
| 7/8" | 190' | 7/8" | 260' |
| 1" | 140' | 1" | 200' |
| 1 1/4" | 90' | 1 1/4" | 130' |
| 1 1/2" | 60' | 1 1/2" | 90' |
| 1 3/4" | 45' | 1 3/4" | 65' |
| 2" | 35' | 2" | 50' |



5C-6 Coiler with Slide Drive Adaptor