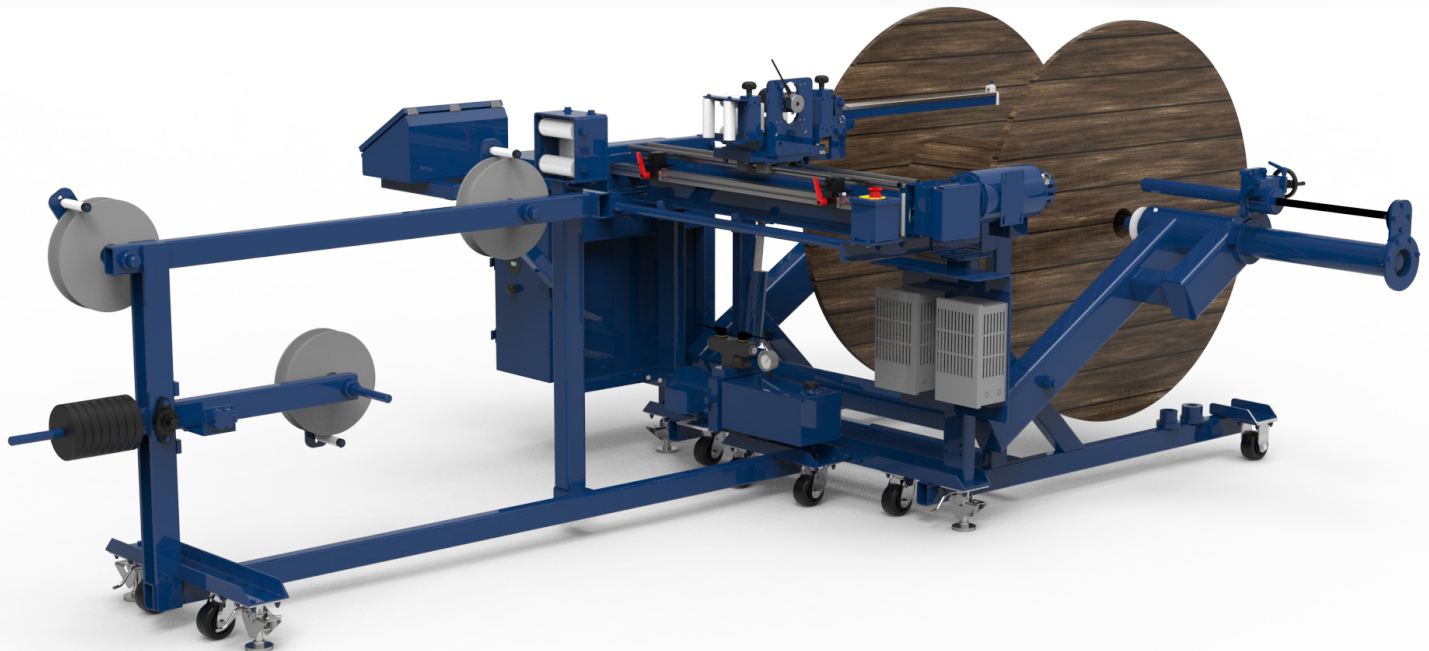
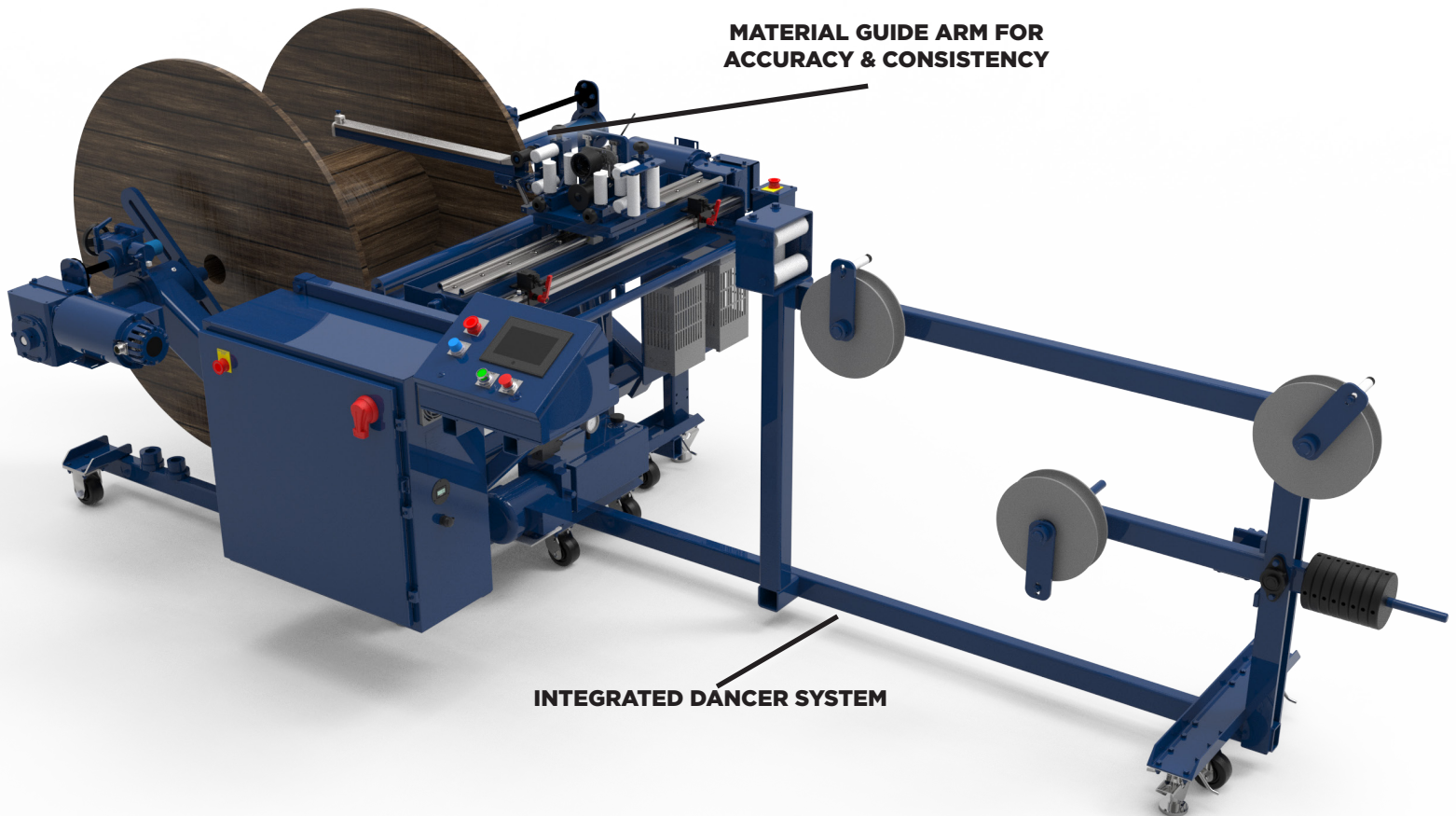


# SP-WKT3



## *Automatic In-Line Mobile Shaftless Take-up Machine*

For reels 20" to 54" diameter x up to 34" wide x 1,000 lb lifting capacity.



**REELPOWER**  
INDUSTRIAL

5101 S. Council Road, Suite 100 • Okla. City, OK. 73179

405.672.0000 • 405.672.7200 Fax

[www.reelpowerind.com](http://www.reelpowerind.com)

## *Automatic In-Line Mobile Shaftless Take-up Machine*

### **Features:**

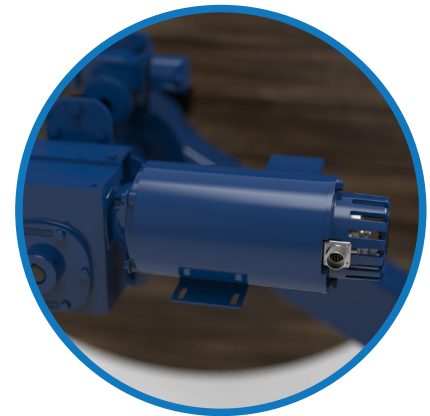
- 1 HP AC Vector Variable Speed Drive, 0-70 RPM, 480 Volt, 3 Phase with AC Vector Tension Control for synchronizing with the extrusion process
- Capable of maintaining 100 FPM at an 8" drum diameter with additional speed for catching up when switching reels of 145 FPM
- AC Vector, Automatic Levelwind for material up to 2" diameter
- Entry and exit guides, provision for mounting the 1700SP Measurer
- Electro lift for raising and lowering the reels
- Operator safety footswitch for engaging the drive by depressing the foot pedal
- Slide drive shaft disconnect for quicker, easier change over from reel to reel or coiler
- 1 3/8" diameter reel shaft
- Reel shaft bearings
- One set of standard bushings for 2", 2 1/2" and 3" arbor holes
- Heavy-duty casters and floor locks.
- Wire roller and push handle
- Automated stop to length measuring system

### **Options:**

- Standard-duty manual shaftless option with dual manual slide
- Pintle stub shafts (1.375" diameter) 2, 2 1/2, and 3" bushings, 20" min reel width
- AC Vector Digital Auto-levelwind (Includes HMI/PLC controls) with back tensioning device with rollers with mechanical arm
- Dancer arm
- Brake
- Manual stretch wrap



**HMI CONTROL PANEL**



**VARIABLE SPEED DRIVE**



**SLIDE DRIVE SHAFT DISCONNECT**