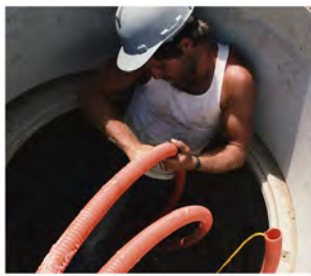


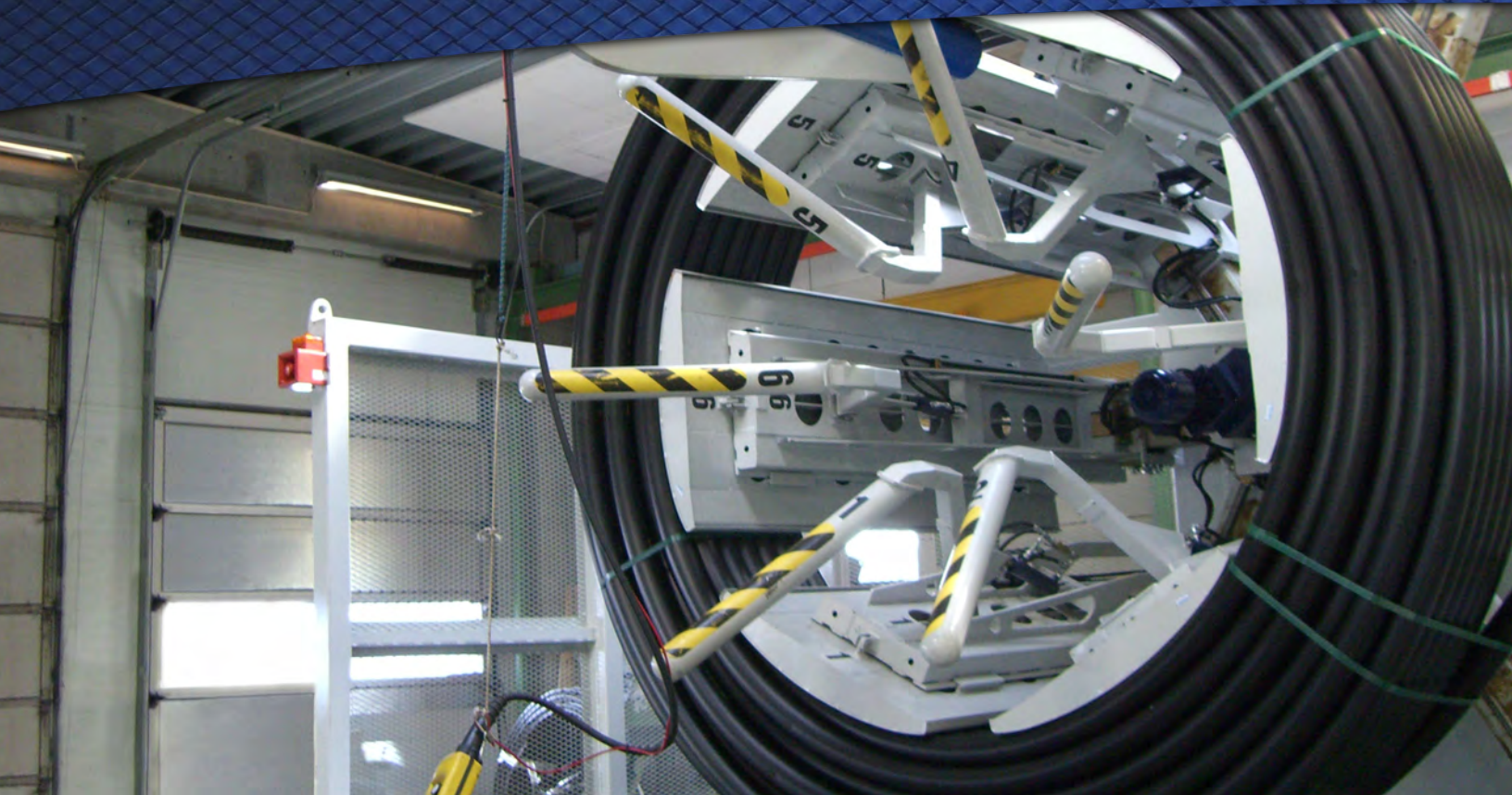
# REELPOWER

INDUSTRIAL



Semiautomatic Coiling Equipment





## LOWER COST COILING

Semiautomatic coilers are a low cost alternative to fully automatic equipment. These coilers wind the product as it emerges from the extrusion line automatically following extrusion speed using dancer arm or torque control, and they automatically layer the pipe into the desired coil shape. Attachment of the product to the reel is manual as is cutting at the end of extrusion. Packaging is applied by the operator who also is required to unload the finished coil. Automatic pipe layering and auto stop at pipe end are standard across the range.



## THE BENEFITS OF SEMIAUTOMATIC COILERS

### REDUCED COSTS

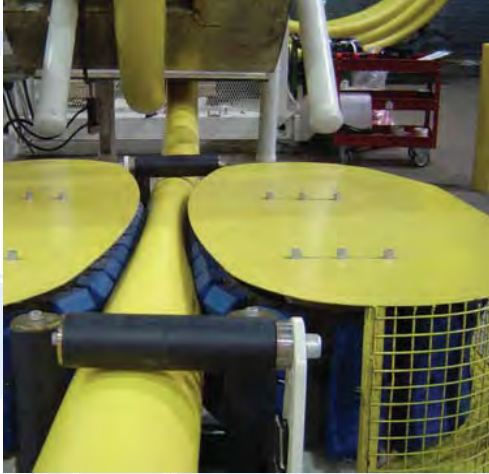
Only one operator is required to oversee the operation of two or more machines. Where coiler utilization is low semiautomatic equipment produces coils comparable to the fully automated process for less capital investment.

**REELPOWER**  
INDUSTRIAL



## PRODUCTION FLEXIBILITY

A wide range of coil head adjustment and interchangeable pipe support plates allow operation across a range of diameters from small diameter tube, hose and conduit up to 6" diameter HDPE pressure pipe.



## SEMI-AUTOMATIC COILER RANGE

Systems within our semiautomatic range are typically used for 1.5" to 6" diameter HDPE, PEX and nylon pressure pipe, composite pipes and pre-insulated pipes. Wheel mounting allows easy movement between lines.

## ADD ON TECHNOLOGIES

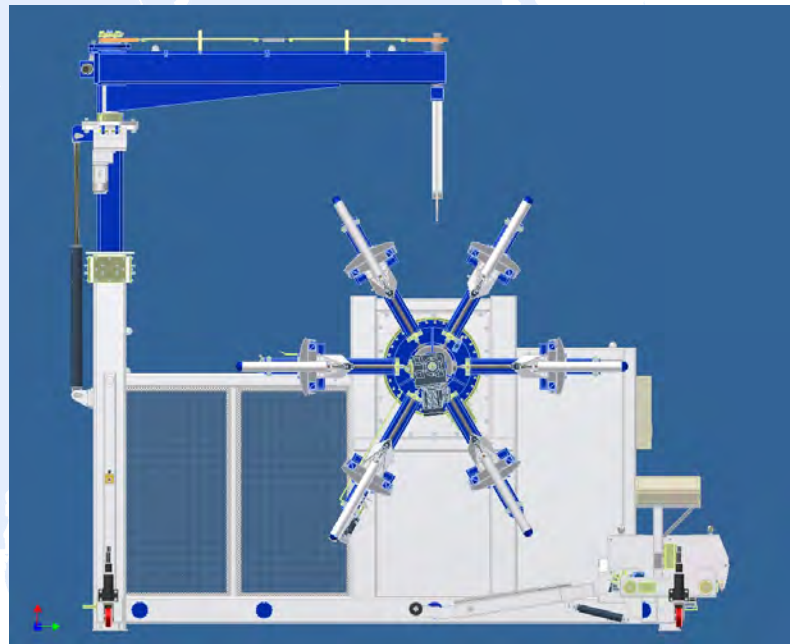
- Low Ovality Technology - reduces pipe ovality in PE and PEX pipes

## STANDARD FEATURES

- Wide range of coil head adjustment
- Safe and ergonomic operation
- Automatic pipe layering
- Automatic stop at pipe end

## OPTIONS

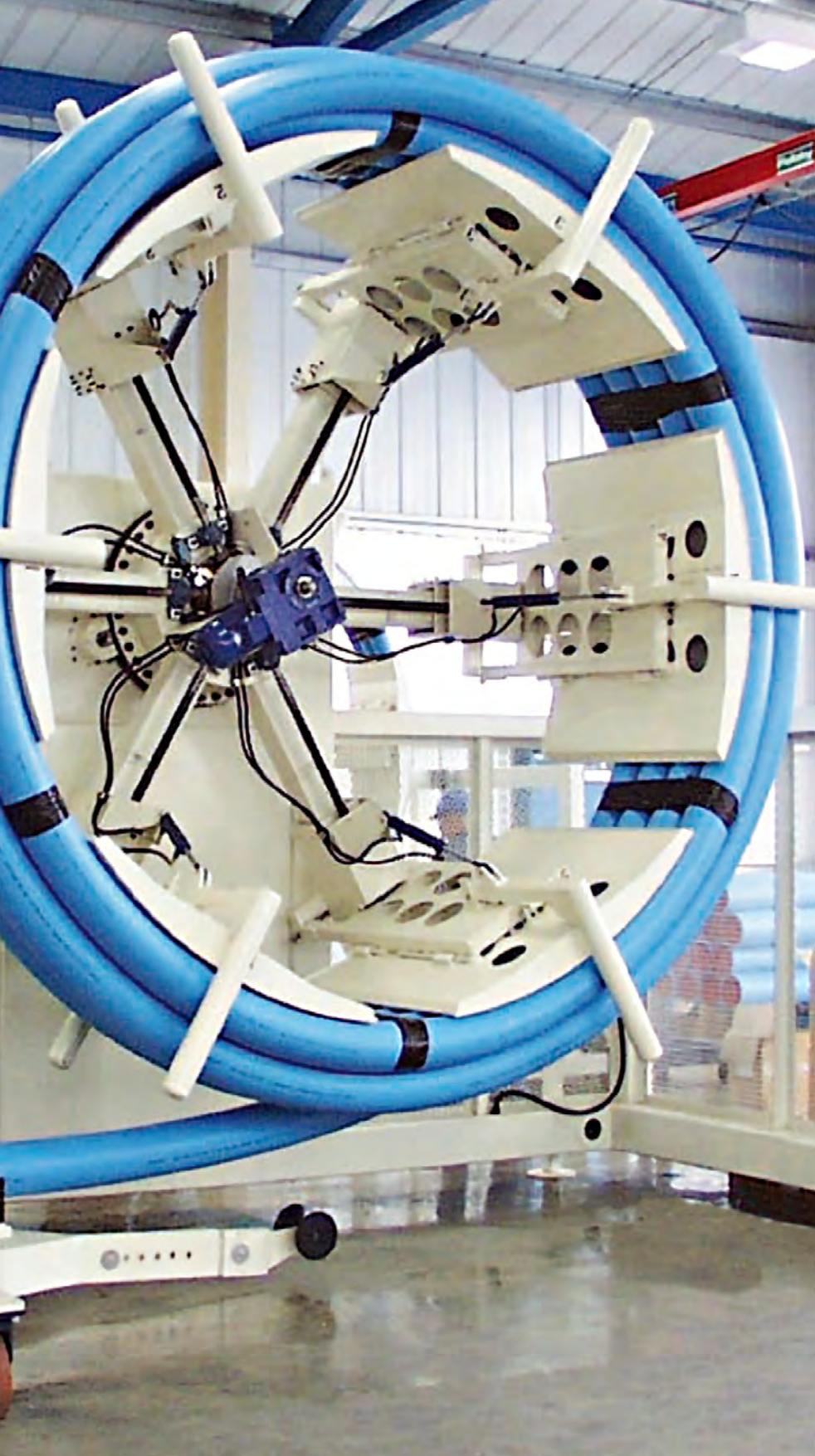
- Wheel mounting
- Integrated coil unload device
- Automatic strapping



## RANGE SUMMARY

Model ref.	SPC060SH	SPC090SH	SPC125SH	SPC125SHW	SPC180SH	SPC180SHW
Pipe size	1" to 2"	2" to 3"	2" to 4"	2" to 4"	3" to 6"	3" to 6"
Coil ID	24" to 50"	48" to 70"	48" to 84"	48" to 84"	68" to 96"	68" to 96"
Coil OD	ID + 24"	ID + 36"	ID + 36"	ID + 36"	ID + 40"	ID + 40"
Coil width	4" to 20"	4" to 20"	12" to 28"	12" to 50"	16" to 50"	16" to 72"
Coil weight (max)	600lbs	750lbs	1,500lbs	3,000lbs	3,000lbs	5,000lbs

All machines are available at varying levels of equipment and automation enabling the most cost effective solution to be specified for each application.



#### **Equipment for plastic pipe, tube, hose & conduit manufacturing:**

- Automatic coiling equipment
- Semiautomatic coiling equipment
- Off-line coiling technology
- Low Ovality Technology
- Drum winding equipment
- Bespoke coiling solutions

#### **Equipment for subsea umbilical, flowline & cable manufacturing:**

- Carousels, loading arms and tensioners
- Drum handling, moving and spooling equipment
- Drum take up & payoff stands
- Production machinery; S-Z lay machines, rotating taping heads, caterpillar haul-offs

#### **Equipment for wire rope & large diameter cable manufacturing:**

- Drum take up and payoff stands
- Turntables and spoolers
- Wire spooling and rewinding

#### **Subsea umbilical, flowline and cable installation:**

- Carousels, loading arms and tensioners
- Drum handling and spooling equipment
- Cable guides and transfer equipment